

### Infanticide may be expected when:

- The infant shows signs of being unrelated (men only)
- The infant is of poor quality
- The parent(s) would do better raising a child in a different circumstance
  - Too-short birth spacing
  - Lack of paternal support
  - Harsh circumstances (that have the potential to change for the better)

### Evidence from the HRAF

Daly & Wilson (1984) collected 112 examples from 60 “independent” societies of circumstances in which infanticide was said to occur.

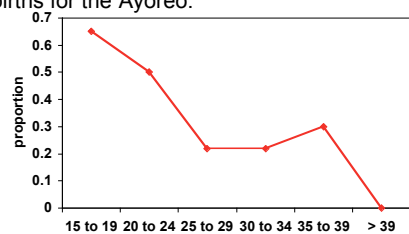
- 20 (18%) in case of non-paternity
  - 15 adulterous conception
  - 3 infant features were suspicious
  - 2 new step-fathers demanded infanticide
- 21 (19%) deformed or very ill infant

### Evidence from the HRAF

- 56 (50%) Poor circumstances
  - 14 twins
  - 14 mother unwed
  - 11 short birth interval, too many children
  - 6 no male support
  - 1 quarrel with husband
  - 6 mother died
  - 3 economic hardship
  - 1 wrong season

### Mother’s Age and Infanticide

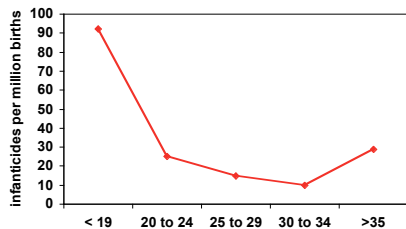
Older mothers are not as likely to commit infanticide, as they have fewer future chances to invest. These data are from 54 infanticides out of 141 births for the Ayoreo.



(Bugos & McCarthy 1984)

### Mother’s Age and Infanticide

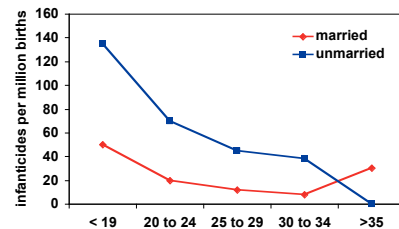
Canada 1974-1983.



(Daly & Wilson)

### Marital Status and Infanticide

Canada 1974-1983.

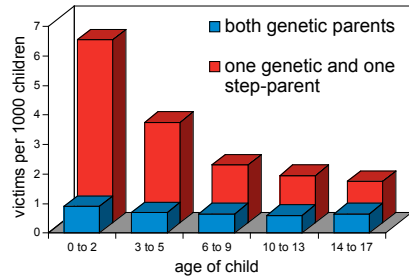


(Daly & Wilson)

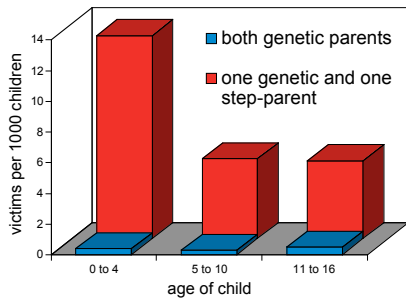
### The Cinderella Effect

- Stepparents are over-represented as child abusers and child killers.
- “Confounders” cannot explain this effect.
- The Cinderella effect is cross-nationally ubiquitous.
- Child abuse is not an adaptation, but *differential mistreatment* is a predictable *by-product* of an adaptation: discriminative parental solicitude.
- Stepparents withhold investment relative to genetic parents.
- Why stepparent at all?

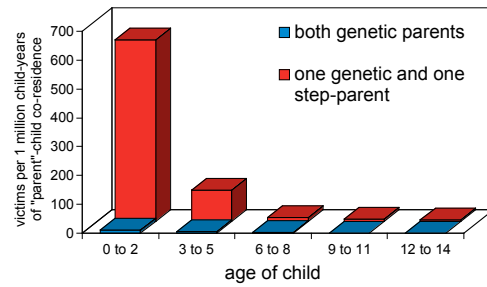
### Child Abuse in the US - 1976



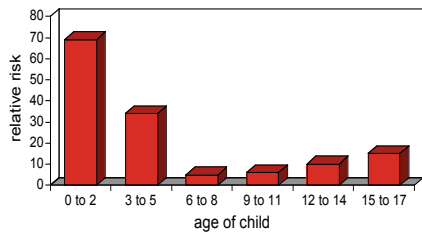
### Child Abuse in Hamilton - 1983



### Child Homicide in Canada - 1974-1983

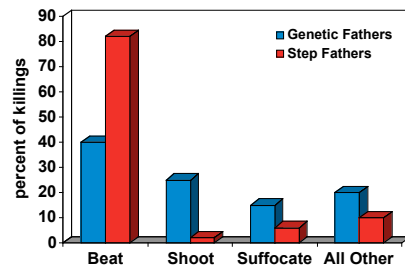


### Relative Risk in Canada - 1974-1983



Relative risk is the ratio between the risk of homicide per child living with both genetic parents and those living with one genetic parent and one step-parent at each age group.

### Methods of Homicide



(Daly & Wilson 1994)

### Sex Differences in Homicide

- In 35 studies of homicide, between 85% and 100% of same-sex homicides occurred between men. (Most of the female-female homicides were infanticides.)
- Mass murderers and those who run *amok* are invariably men.
- The cause of male-male homicide is frequently intrasexual competition for resources or status.

### Social Conflict Homicides

	male killed male	male killed female	female killed male	female killed female
Escalated Showing off	26	0	2	1
Retaliation	75	9	6	5
Jealousy	20	5	6	3
Business	10	1	2	0
Family dispute	5	0	0	0
Other disputes	2	0	1	1
Insufficient Information	26	4	1	1
<b>Total</b>	<b>164</b>	<b>19</b>	<b>18</b>	<b>11</b>

### Spousal Homicide

Data are from homicides recorded in Detroit, 1972; Miami, 1980; Houston, 1969; and Canada 1974-1983.

	males	females
N cases	711	238
Suicides	29.3%	3.4%
Convicted	56.3%	47.9%
Scot-free	8.7%	45.4%
Insane	5.8%	2.5%

### Age and Sex

